

INSTITUTE OF LANDSCAPE ARCHITECTS MALAYSIA (ILAM)

PAPERLESS
ONLINE
SUBMISSION

Malaysia Landscape Architecture Awards

www.ilamalaysia.org/mlaa14

CALL FOR SUBMISSIONS

1 NOVEMBER 2023 - 31 JANUARY 2024



REGISTRATION CLOSING DATE

24 JANUARY 2024 / 6:00pm



SUBMISSION CLOSING DATE

31 JANUARY 2024 / 6:00pm



ORGANISED BY



ENDORSED BY



AN INITIATIVE OF





Malaysia Landscape Architecture Awards



Honouring The Best In Landscape Architecture Industry

This year, Institute Landscape Architecture Malaysia (ILAM) celebrates the 14th edition of landscape architecture industry excellence by rewarding outstanding landscape architecture consultancy firms, developers, researchers, students, contractors, suppliers, government agencies, foundations, trusts, NGOs, and individuals in Malaysia and abroad. These awards honour the best in landscape architecture from various aspects of the industry. **The awards are open to submissions which have not won any previous MLAA Awards in the same category.**

The award recipients will receive a coverage in ILAM's special publication in conjunction with the award - "Landscape Architecture Malaysia Yearbook" as part of the annual prestigious MLAA award ceremony.

Award recipients will be honoured at the Awards Presentation Ceremony during ILAM's MLAA Gala Night, **scheduled in May 2024 at Kuala Lumpur**. The Awards are also part of the activities held in conjunction with the World Landscape Architecture Month Celebrations each year.

Schedule & Timeline

1 NOVEMBER 2023

Announcement "Calling for Submission"

10 JANUARY 2024

MLAA14 Open Day (ONE free seat per registered entry)

24 JANUARY 2024

Last Day to Submit Registration Form

31 JANUARY 2024

Closing Date for Submission

19-21 FEBRUARY 2024

Judging Session

28-29 FEBRUARY 2024

Shortlisted Presentation Session

6-7 MARCH 2024

Site Visit

8 MARCH 2024

Result Endorsement

15 MARCH 2024

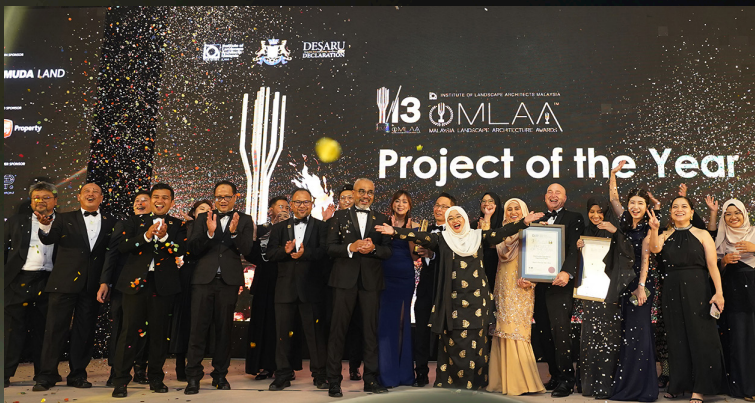
Announcement of Winner

11 MAY 2024

MLAA14 Gala Night / Kuala Lumpur

Note:

Timeline subject to changes



Scan to Watch
MLAA13 Gala Night

Submission Enquiries

DURING OFFICE HOURS ONLY:
MON-FRI / 9:00am - 6:00pm

Secretariat Contact

ILAM Centre of Excellence (ICE) Sdn. Bhd.

1-10-3, Presint ALAMI, Pusat Perniagaan Worldwide 2, Persiaran Akuatik, Seksyen 13,
40100, Shah Alam, Selangor, Malaysia. T : +(60)19-881 7016



Award Exposures

Landscape Architecture Malaysia Yearbook

Gain exposure for your projects via the MLAA submission. Qualified submissions will be published in ILAM's annual coffee-table book.

LAND.SCAPE Magazine

Selected winners of MLAA will be featured in ILAM's LAND.SCAPE Magazine

Media Exposure

Selected winners of MLAA may be highlighted for media interviews before/after the award ceremony.

CPD and Seminar

Outstanding projects will be invited to share the projects with the professionals via ILAM CPD Events.

How To Participate?



STEP 1

Fill up the form, bank in the total payment and email the form and bank in slip to mlaa14edition@gmail.com
LAST DAY TO SUBMIT REGISTRATION FORM
24 JANUARY 2024



STEP 2

Upon receiving the payment and registration, An **ENTRY NUMBER, ENTRY FORMS** alongside with **SUBMISSION GUIDELINES** will be e-mailed to you by ILAM.



STEP 3

Each project must be submitted along with the **UNIQUE ENTRY NUMBER** given by ILAM upon registration. Please read and follow the submission guidelines.



STEP 4

Upload completed files to any online cloud storage.

Click The Submission Link below and Fill in the submission **ENTRY NUMBER** and **FILES DOWNLOAD LINK**

Submission Link can be obtain via
www.ilamalaysia.org/mlaa14



REGISTRATION CLOSING DATE

24 JANUARY 2024 / 6:00pm



SUBMISSION CLOSING DATE

31 JANUARY 2024 / 6:00pm

Award Categories

LANDSCAPE ARCHITECTURE FIRM

01 & 02 / PROFESSIONAL CATEGORY

Malaysian and International Projects

- Landscape Design Awards
- Landscape Analysis and Study Awards

PROPERTY DEVELOPER

03 / DEVELOPER CATEGORY

Malaysian and International Projects

- Landscape Development Awards
- Landscape Master Plan Awards

LANDSCAPE CONTRACTOR

04 / LANDSCAPE CONTRACTOR CATEGORY

- Landscape Construction Awards

SUPPLIER

05 / GREEN PRODUCT CATEGORY

- Green Product Awards

GOVERNMENT & LOCAL COUNCIL

06 / GOVERNMENT CATEGORY

- Green Initiative Awards

NGO / CORPORATION / GLC / FIRM

07 / CSR CATEGORY

- Green Initiative Awards

RESEARCHER

08 / RESEARCH CATEGORY

- Landscape Research Awards

UNIVERSITY STUDENT

09 / STUDENT CATEGORY

- Landscape Design Awards

OPEN TO ALL

10 / CLIMATE ACTION CATEGORY

- Environmental & Landscape Management Awards
- NEW** Low Carbon Landscape Awards
- Green Infrastructure Awards

LANDSCAPE INDUSTRY RECOGNITION

11 / PROFESSIONAL INDIVIDUAL (one time submission)

- Young Landscape Architects Awards (*Aged 35 and below*)
- NEW** Emerging Landscape Architect Awards (*Aged 36-45*)
- NEW** Prominent Landscape Architect Awards (*Aged 46-60*)

12 / PROFESSIONAL FIRM (one time submission)

- Emerging Landscape Architecture Firm (*Firm 10 years and below / Principal 15 years or below from obtaining LAr*)
- Top Landscape Architecture Firm (valid for 3 years) (*Firm at least 11 years / Registered with ILAM*)

SPECIAL RECOGNITION

13 / SELECTED AMONG THE SUBMITTED ENTRIES

- Preservation & Conservation Awards (*social, nature, cultural, historical*)

AWARD TYPES

CRITERIAS

SUBMISSION FEES

1A
Landscape Design Awards

Malaysian Projects

Landscaping and gardens for commercial space or residential, roof top garden, plaza, courtyard, residential garden, neighbourhood and pocket parks, waterfront, streets and highways within the range of landscape contexts, and many more.

The jury will observe the quality of design in terms of the novelty of design ideas and concepts in solving design problems in relation to environmental sensitivity, and users' needs via the hard and soft landscape design. The jury will also look at how the design contributes to the expansion of landscape architecture practice and knowledge and the fulfillment of SDG2030 approaches.

Entry Criterias

- Project must be submitted by Landscape Architecture Firm
- Project must be submitted by **ILAM Corporate Member (LAr.)**
- Completed projects in Malaysia

Judging Criterias

- Design Idea and Concept (30%)
- Environmental Sensitivity and Problem Solving (20%)
- Soft & Hard Landscape Design (15%)
- Users' & Social Needs (20%)
- Fulfillment of SDG2030 approaches (15%)

RM 650 / project
(ILAM Registered Firm)

RM 1,300 / project
(Non ILAM Registered Firm)



AWARD TYPES

CRITERIAS

SUBMISSION FEES

1B
Landscape Analysis and Study Awards

Malaysian Projects

Submissions for this category include large scale landscape planning and urban design based on a comprehensive landscape analysis exercise. The entries for this category are not required to be completed or can be partially constructed.

Master plan for educational and training campus, urban areas, new township, natural resources areas (eg. river and wetlands corridors and forested areas), green infrastructures, rural areas, greenways, tourism areas, as well as urban and regional parks. A comprehensive study for cultural/historical landscape, municipality structure and local plan as well as a city landscape master plan is also accepted.

The landscape planning and design solution must have likelihood to be implemented successfully and able to contribute to the expansion of landscape architecture knowledge and values.

Entry Criterias

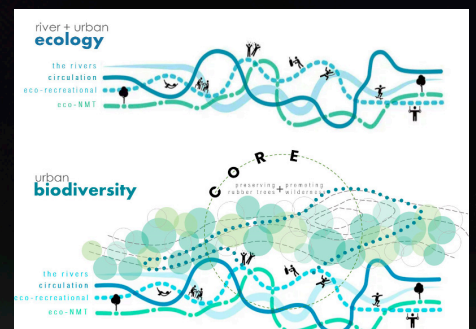
- Project must be submitted by Landscape Architecture Firm
- Project must be submitted by **ILAM Corporate Member (LAr.)**
- The entries not required to be completed or can be partially constructed.

Judging Criterias

- Inventory & Analysis (25%)
- Environmental Sensitivity (20%)
- Users' & Social Needs (20%)
- Economic Consideration (20%)
- Fulfillment of SDG2030 approaches (15%)

RM 650 / project
(ILAM Registered Firm)

RM 1,300 / project
(Non ILAM Registered Firm)



AWARD TYPES

CRITERIAS

SUBMISSION FEES

2A
Landscape Design Awards

International Projects

Landscaping and gardens for commercial space or residential, roof top garden, plaza, courtyard, residential garden, neighbourhood and pocket parks, waterfront, streets and highways within the range of landscape contexts, and many more.

The jury will observe the quality of design in terms of the novelty of design ideas and concepts in solving design problems in relation to environmental sensitivity, and users' needs via the hard and soft landscape design. The jury will also look at how the design contributes to the expansion of landscape architecture practice and knowledge and the fulfillment of SDG2030 approaches.

Entry Criteria

- **OPEN TO ALL**
- The official entrant can be any firm from Malaysia or abroad in which the landscape architect involved in the project must be a member of the local national association, **registered with International Federation of Landscape Architects (IFLA).**
- Limited to International completed projects only

Judging Criteria

- Design Idea and Concept (30%)
- Environmental Sensitivity and Problem Solving (20%)
- Soft & Hard Landscape Design (15%)
- Users' & Social Needs (20%)
- Fulfillment of SDG2030 approaches (15%)

RM 2,000 / project



AWARD TYPES

CRITERIAS

SUBMISSION FEES

2B
Landscape Analysis and Study Awards

International Projects

Submissions for this category include large scale landscape planning and urban design based on a comprehensive landscape analysis exercise. The entries for this category are not required to be completed or can be partially constructed.

Master plan for educational and training campus, urban areas, new township, natural resources areas (eg. river and wetlands corridors and forested areas), green infrastructures, rural areas, greenways, tourism areas, as well as urban and regional parks. A comprehensive study for cultural/historical landscape, municipality structure and local plan as well as a city landscape master plan is also accepted.

The landscape planning and design solution must have likelihood to be implemented successfully and able to contribute to the expansion of landscape architecture knowledge and values.

Entry Criteria

- **OPEN TO ALL**
- The official entrant can be any firm from Malaysia or abroad in which the landscape architect involved in the project must be a member of the local national association, **registered with International Federation of Landscape Architects (IFLA).**
- Limited to International completed projects only
- The entries not required to be completed or can be partially constructed.

Judging Criteria

- Inventory & Analysis (25%)
- Environmental Sensitivity (20%)
- Users' & Social Needs (20%)
- Economic Consideration (20%)
- Fulfillment of SDG2030 approaches (15%)

RM 2,000 / project



AWARD TYPES

CRITERIAS

SUBMISSION FEES

3A Landscape Development Awards

Malaysian or International Projects

Developments (site-specific areas or large scale projects) that identify and incorporate a wide range of landscape values and benefits via landscape architecture planning and design exercise. Entries in this category must have been built and completed.

Typical entries include (but are not limited to) Residential developments, commercial zone, educational and training campuses, mix-use development, redevelopment of urban areas as well as site specific development such as parks and recreational areas, waterfronts, urban plazas, sculpture park, green infrastructures, highways, streetscapes, flood and storm water design, forest and wetlands conservation exercise.

Entry Criteria

- The official entrant must be from a Developer Firm.
- Projects are not limited to Malaysia. They may cover projects completed outside Malaysia which were undertaken by the developer and demonstrate the involvement of ILAM members.
- ILAM Corporate Member (LAr.) endorsement of the entry is required.

Judging Criteria

- Philosophy, Idea and Concept of Landscape Planning (30%)
- Environmental Sensitivity (20%)
- Users' & Social Needs (20%)
- Fulfillment of SDG2030 approaches (20%)
- Special Features/Bonus (10%)

RM 5,500 / per submission



AWARD TYPES

CRITERIAS

SUBMISSION FEES

3B Landscape Master Plan Awards

Malaysian or International Projects

Submissions for this category include large scale landscape development planning undertaken by a developer based on a comprehensive landscape analysis exercise, and their findings. The entries for this category are not required to be completed or can be partially constructed.

Type of Entries include (but are not limited to) Master plan for landscape development for township, residential enclave or nature preservation such as rivers, lakes, wetland corridors and forested areas, green infrastructures, rural areas, greenways, tourism areas, urban and regional parks as well as urban renewal projects.

Entry Criteria

- The official entrant must be from a Developer Firm.
- Projects are not limited to Malaysia. They may cover projects outside Malaysia which were undertaken by the developer and demonstrate the involvement of ILAM members.
- ILAM Corporate Member (LAr.) endorsement of the entry is required.
- Submission not required a completed project

Judging Criteria

- Inventory & Analysis (25%)
- Environmental Sensitivity (20%)
- Users' & Social Needs (20%)
- Economic Consideration (15%)
- Fulfillment of SDG2030 approaches (20%)

RM 5,500 / per submission



AWARD TYPES

4A Landscape Construction Awards

Malaysian or International Projects

Recognises quality of construction and workmanship of landscape architecture project. Entries in this category must have been built and completed.

Entries include all types of construction work related to landscape architecture planning and design. Submitted works must be designed and endorsed by an ILAM member.

The jury will consider the ability of the contractor to materialise a design concept envisioned by a landscape architect through sound construction methods and high quality of workmanship. A site visit may be conducted on selected projects by the jury.

Note:

For projects outside Klang Valley, cost of the site visit for at least two jury members will be borne by submitting contractor. (if required)

CRITERIAS

Entry Criterias

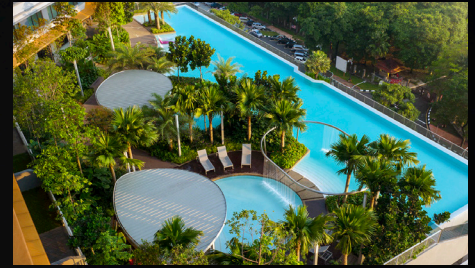
- Must be a landscape construction work designed by ILAM member (Corporate, Graduate, Foreign Member) from the Landscape Consultancy Firm which was involved in the submitted project. Endorsement of the ILAM Corporate Member (LAr.) is required.
- Projects are not limited to Malaysia. Projects completed outside of Malaysia designed by ILAM Member or ILAM registered consultancy firms are also eligible to enter.
- ILAM Corporate Member (LAr.) & Project Client endorsements of the entry are required.

Judging Criterias

- Perceived Overall Site Management (15%)
- Construction / Planting Method (30%)
- Workmanship (35%)
- Response From Landscape Architect (10%)
- Response From Client (10%)

SUBMISSION FEES

RM 3,000 / per submission



Green Product Category 05

AWARD TYPES

5A Green Product Awards

Recognises "Out of the box" and "Innovative" green products that relate to the enhancement of the overall landscape architecture industry.

Typical entries include (but are not limited to) Landscape furniture, planting materials, play equipment, water harvesting products, energy saving products, bio-technology products, lighting and many more.

CRITERIAS

Entry Criterias

- **OPEN TO ALL**
- Green product that contributes to the sustainability of our environment
- Demonstrate its practicality, required to be proven working or implemented.
- ILAM Corporate Member (LAr.) & Project Client endorsements of the entry are required.

Judging Criterias

- Issue & Problem Statement (10%)
- Concept, Novelty & Idea (35%)
- Sustainability to the Environment (20%)
- Sensitivity to Users' Need (25%)
- Professionalism in Presentation (10%)

SUBMISSION FEES

RM 2,500 / per submission



AWARD TYPES

6A Green Initiatives Awards

Social and environmental driven programs, events, campaigns or landscape architectural projects that contribute towards the enhancement of city greenery, economy and community well-being.

01-Landscape architectural project
Parks, plazas, courtyards, gardens, streetscape, waterfront, promenade, thematic attraction, etc.

02-Natural and landscape resources planning and management plan.

03-Programs, events, campaigns that contribute to the city environment, landscape and community well-being.

04-Placemaking initiatives.

CRITERIAS

Entry Criterias

- Open to City Council, Government Agency, Public Institution
- Submission must be a social and environmental driven programs, events, campaigns or landscape architectural projects
- Programs, events or campaigns must be already implemented with a proven successful story.
- Landscape architectural projects must be completed.
- Should be submitted by Landscape Architect
- **LIMITED TO 2 SUBMISSIONS** per organisation
- Failure to comply with submission requirements may resulted in disqualification

Judging Criterias

- Enhancing city image, progress and growth (10%)
- Enhancing city environmental quality or community awareness (40%)
- Enhancing for city dwellers' needs & well-being (30%)
- SDG fulfillment & Community Participation (20%)

SUBMISSION FEES

FREE OF CHARGE
LIMITED TO TWO SUBMISSIONS
PER ORGANISATION



CSR Category 07

AWARD TYPES

7A Green Initiatives Awards

Social and environmental driven programs, events, campaigns or landscape architectural projects that contribute towards the enhancement of city greenery, economy and community well-being.

Placemaking initiatives.

CRITERIAS

Entry Criterias

- **OPEN TO ALL (non-Government)**
- Proven of CSR effort
- **LIMITED TO 2 SUBMISSIONS**

Judging Criterias

- Enhancing city image, progress and growth (10%)
- Enhancing city environmental quality or community awareness (40%)
- Enhancing for city dwellers' needs & well-being (30%)
- SDG fulfillment & Community Participation (20%)

SUBMISSION FEES

FREE OF CHARGE
LIMITED TO TWO SUBMISSIONS
PER ORGANISATION



NOTE:

The judging criteria serves as a guide only, the jury may amend the judging criteria if necessary

AWARD TYPES

CRITERIAS

SUBMISSION FEES

8A Landscape Research Awards

Recognises research works, which in the form of landscape development policy planning and design, as well as landscape architecture education and practices.

Typical entries include (but are not limited to) Research inquiry on policy, design and planning pertaining to landscape architecture, environmental and social impact assessment, operation and management, landscape architecture practice, enhancement of landscape industry, landscape architecture and design education, landscape construction methods and technology, horticulture, urban forestry, etc.

The jury will consider research that has valid research issues, problems, methods and analysis. The findings and conclusions shall address its contribution to landscape development or architecture practice.

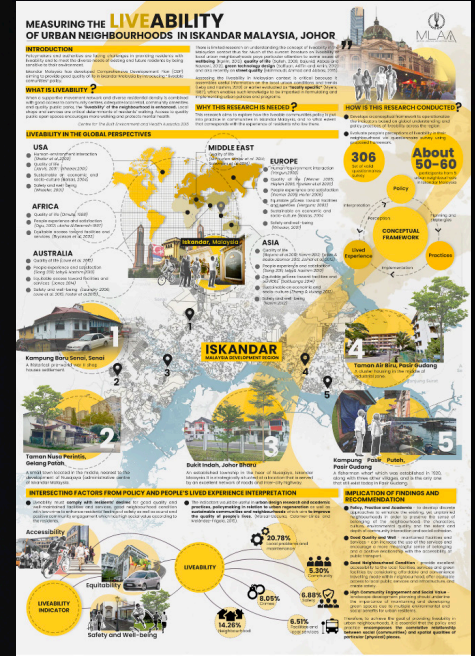
Entry Criteria

- Open to all local researchers
- The submission will be in a PDF poster format (A1 size, portrait) maximum two sheets
- Abstract to be included.

Judging Criteria

- Introduction and Issues/ Problems (15%)
- Approach / Method of Research / Project (25%)
- Findings And Solutions (25%)
- Contribution To Knowledge Practice (35%)

RM 500 / per submission



Submission format:
Maximum of 2 x A1 Size (Portrait)

Student Category 09

AWARD TYPES

CRITERIAS

SUBMISSION FEES

9A Student Design Awards

Site-specific works of landscape architecture - from small scale landscape design to landscape planning for townships and mega developments. Entries in this category must be from the design work by landscape architecture students from local universities or higher learning institutions (Bachelor's or Master's programs).

The jury will observe the comprehensiveness of site analysis and synthesis and its relationship to the development of novel design ideas and concepts that are concerned with the surrounding context, environment, cultural values and peoples' needs.

Entry Criteria

- Landscape architecture students from local universities
- Submission must be endorsed by the Faculty / University.
- Design projects are not limited to Malaysia. Projects outside of Malaysia by local university students are also eligible in this category.

Judging Criteria

- Site Inventory & Analysis (20%)
- Idea and Novelty of the Concept (20%)
- Sensitivity to Local Context (10%)
- Sensitivity to Culture Values, People Needs or Environment (20%)
- SDG2030 Fulfillment (10%)
- Graphic Communication (20%)

RM 150 / per submission



Submission format:
Maximum of 2 x A1 Size (Portrait)

NOTE:
The judging criteria serves as a guide only, the jury may amend the judging criteria if necessary

AWARD TYPES

10A Environmental & Landscape Management Awards

Submissions for this category include medium to large scale landscape development planning that demonstrate the sustainability in design, maintenance and management. The entries for this category are required to be completed.

Type of Entries include (but not limited to) Sustainable Landscape Management Plan for township, residential enclave or nature preservation such as rivers, lakes, wetland corridors and forested areas, rural areas, greenways, tourism areas, urban and regional parks as well as urban renewal projects.

Submission should be in a form of self-explanatory video (max 5 min) or documented materials

CRITERIAS

Entry Criterias

- **OPEN TO ALL** (Developer, Joint Management Body (JMB), Landscape Architecture Firm etc).
- Entries must be a project with sustainable management approach.
- Project with management plan developed by Landscape Architect.
- ILAM Corporate Member (LAr.) endorsements of the entry is required.

Judging Criterias

- Sustainable Management Plan (30%)
- Sustainability in Planning and Design (20%)
- Sustainability Features (Technology, Methods etc) - (20%)
- Sustainable Landscape Maintenance (20%)
- SDG fulfillment (10%)

SUBMISSION FEES

RM 1,500 / per submission



AWARD TYPES

NEW

10B Low Carbon Landscape Awards

Submissions for this category include low carbon landscape and development planning, that contributes to the reduction of greenhouse gas emissions and minimize the overall carbon footprint.

Elements that contribute to the Low Carbon Initiatives (with quantifying proof) includes:

1. Mobility Planning
2. Greeneries
3. Energy Consumption
4. Waste Management
5. Water Conservation

Submission should be in a form of self-explanatory video (max 5 min) or documented materials

CRITERIAS

Entry Criterias

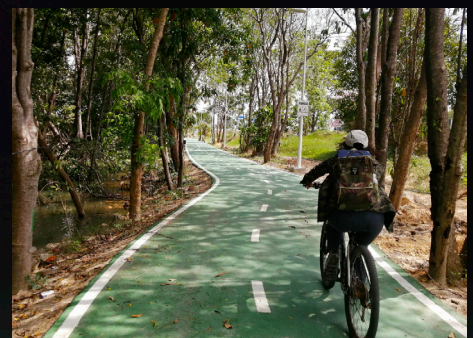
- **OPEN TO ALL** (Developer, Landscape Architecture Firm etc).
- Entries must be a project with Low Carbon Design or planning.
- Completed Project or Master Planning Stage
- Submission must include the proof with quantifying data that showcase the low carbon initiatives in design and planning
- ILAM Corporate Member (LAr.) endorsements of the entry is required.

Judging Criterias

- Overall Low Carbon Initiatives (30%)
- Component of Low Carbon in Design and Planning (30%)
- Implementation Strategies (30%)
- SDG fulfillment (10%)

SUBMISSION FEES

RM 1,500 / per submission



*NOTE:
The judging criteria serves as a guide only, the jury may amend the judging criteria if necessary*

AWARD TYPES

10C Green Infrastructure Awards

Green Infrastructure Awards recognise and celebrate innovative projects that prioritise sustainability and environmental stewardship in urban planning and development.

Green Infrastructure focuses on integrating natural and engineered systems to create more resilient, sustainable, and healthy communities.

This award also recognises man-made network that provides the “ingredients” for solving urban and climatic challenges by building with nature.

Submission should be in a form of self-explanatory video (max 5 min) or documented materials

CRITERIAS

Entry Criterias

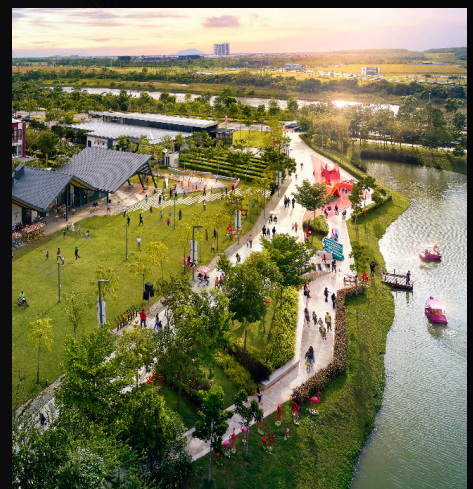
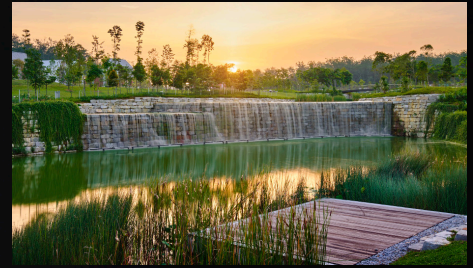
- **OPEN TO ALL** (Developer, Landscape Architecture Firm etc).
- Entries must be a completed Project designed by Landscape Architect.
- ILAM Corporate Member (LAr.) endorsements of the entry is required.

Judging Criterias

- Showcasing Environmental Benefits (20%)
- Innovative approaches in problem solving (20%)
- Climate Resilience (20%)
- Community & Social Impact (20%)
- Performance and Effectiveness (10%)
- SDG fulfillment (10%)

SUBMISSION FEES

RM 1,500 / per submission



11A Young Landscape Architect Awards

Individuals who have shown exceptional leadership and made significant contributions to the profession in an early stage of their landscape architecture career.

Candidates will be evaluated on how well they meet the program criteria as below:

- A **one-page nomination letter** by any ILAM Corporate Member.
- A **biography**, not to exceed two pages, including a list of offices, positions, honours, publications, and presentations.
- A **write up and illustration about personal design idea and philosophy** (maximum of 15 pages) that best demonstrate the outstanding accomplishments.
- **Submit a self video (max 3 minutes)** describing why the jury should nominate you as the recipient of this award.

Entry Criteria

- **Aged 35 and below**
- **ILAM Graduate or Corporate members (LAr.)** who are in good standing and are currently practicing landscape architecture
- Candidates who have received the award before, are not eligible to enter

Judging Criteria

PHILOSOPHY & IDEAS ABOUT :

- Landscape Architecture (40%)
- Personality & Leadership (30%)
- Contribution to the Profession (20%)
- Bonus (10%)

Selection Process

- Shortlisted candidates/ submission will be called for a presentation before the panel of jury.

Submission Fees

RM 300 / per submission

11B Emerging Landscape Architect Awards

NEW

Individuals who have shown exceptional leadership and made significant contributions to the profession in an intermediate stage of their landscape architecture career.

Candidates will be evaluated on how well they meet the program criteria as below:

- A **one-page nomination letter** by any ILAM Corporate Member.
- A **biography**, not to exceed two pages, including a list of offices, positions, honours, publications, and presentations.
- A **write up and illustration about personal design idea and philosophy, contributions** (maximum of 15 pages) that best demonstrate the outstanding accomplishments.
- **Submit a self video (max 3 minutes)** describing why the jury should nominate you as the recipient of this award.

Entry Criteria

- **Aged 36 to 45**
- **ILAM Corporate members (LAr.)** who are in good standing and are currently practicing landscape architecture
- Candidates who have received the award before, are not eligible to enter

Judging Criteria

PHILOSOPHY & IDEAS ABOUT :

- Landscape Architecture (40%)
- Personality & Leadership (30%)
- Contribution to the Profession (20%)
- Bonus (10%)

Selection Process

- Shortlisted candidates/ submission will be called for a presentation before the panel of jury.

Submission Fees

RM 800 / per submission

11C Prominent Landscape Architect Awards

NEW

Individuals who have shown exceptional leadership and made significant contributions to the profession in the advance stage of their landscape architecture career.

Candidates will be evaluated on how well they meet the program criteria as below:

- A **one-page nomination letter** by any ILAM Corporate Member.
- A **biography**, not to exceed two pages, including a list of offices, positions, honours, publications, and presentations.
- A **write up and illustration about personal design idea and philosophy, contributions** (maximum of 15 pages) that best demonstrate the outstanding accomplishments.
- **Submit a self video (max 3 minutes)** describing why the jury should nominate you as the recipient of this award.

Entry Criteria

- **Aged 46 to 60**
- **ILAM Corporate members (LAr.)** who are in good standing and are currently practicing landscape architecture
- Candidates who have received the award before, are not eligible to enter

Judging Criteria

PHILOSOPHY & IDEAS ABOUT :

- Landscape Architecture (40%)
- Personality & Leadership (30%)
- Contribution to the Profession (20%)
- Bonus (10%)

Selection Process

- Shortlisted candidates/ submission will be called for a presentation before the panel of jury.

Submission Fees

RM 1,200 / per submission

12A Emerging Landscape Architecture Firm

This recognition aims to recognise emerging landscape architecture firm with exceptional design talents and innovative works of landscape architecture.

Eligibilities

- Firm should be **10 years or below** of practice.
- Main **principal** of the company should be **15 years or below** from obtaining LAR.
- The firm must be **REGISTERD** with **ILAM** to be eligible.
- Firms that have **won this award before** are **NOT ELIGIBLE** to submit.

Submission Document

A-COMPANY PROFILE

1. A brief history of the firm, not to exceed two pages in length.
2. A list of the firm's achievements (including awards), not to exceed two pages in length.
3. At least TWO Client recommendation letter
4. A brief biography of firm principals, not to exceed four pages total.
5. Photo of each firm principal, or group photo.
6. Compilation (up to 10) company recent project or key projects

Judging Criterias

- The firm's influence on the direction/profession of landscape architecture.
- The collaborative environment of the firm, evidencing strong communication among specific areas of expertise.
- The consistent quality of the firm's work and its recognition by those who practice landscape architecture.

Selection Process

- Shortlisted candidates/submission will be called for a presentation before the panel of jury.

Submission Fees

RM 1,000 / per submission

12B Top Landscape Architecture Firm

(Award Title Valid for 3 years)

The Landscape Architecture Firm Award is the highest honor that the Institute of Landscape Architects (ILAM) may bestow on a Malaysian landscape architecture firm. To recognise landscape architecture firms that have produced bodies of distinguished work influencing the professional practice of landscape architecture.

Eligibilities

1. Any firm or successor firms in which the continuing collaboration among individuals of the firm has been the principal force in consistently producing distinguished landscape architecture for a period of at least 11 years and above.
2. The firm must be **REGISTERD** with **ILAM** to be eligible.

Submission Document

A-COMPANY PROFILE

1. A brief history of the firm, not to exceed two pages in length.
2. A list of the firm's achievements (including MLAA awards and others), not to exceed two pages in length.
3. At least TWO Client recommendation letter
4. A brief biography of firm principals, not to exceed four pages total.
5. Photo of each firm principal, or group photo.
6. Compilation (up to 10) company recent project or key projects

Judging Criterias

- The firm's influence on the direction/profession of landscape architecture.
- The collaborative environment of the firm, evidencing strong communication among specific areas of expertise.
- The consistent quality of the firm's work and its recognition by those who practice landscape architecture.

Selection Process

- Shortlisted candidates/submission will be called for a presentation before the panel of jury.

Submission Fees

RM 1,500 / per submission

AWARD TYPES

CRITERIAS

SUBMISSION FEES

13A
**Preservation and
Conservation Awards**
*(Social, Nature, Cultural,
Historical)*

This award recognises a holistic approach to landscape management, cultural heritage landscape, aiming to reconcile the competing objectives of nature conservation and economic activities across a given landscape.

Entry Criterias

- All submitted entries are eligible to be nominated
- These awards will be determined by the jury from all the submitted entries.
- These categories are not opened for submission.

Not Open for Submission





MALAYSIA LANDSCAPE ARCHITECTURE AWARDS REGISTRATION FORM



REGISTRATION CLOSING DATE
24 JANUARY 2024 / 6:00pm



SUBMISSION CLOSING DATE
31 JANUARY 2024 / 6:00pm

ORGANISED BY



MANAGED BY



OFFICIAL ENTRANT

* COMPULSORY FIELD

Firm/Agency/Developer*
Organisation/Individual

Address*

Important Contact Person*

(Person incharge of submission or any personnel that can be contactable if required by the secretariat or the jury during the judging session)

Designation*

Tel No

Mobile Number*

Website

Are you a ILAM Member?

ILAM Member (Check one)

- ILAM Corporate Member
 ILAM Graduate Member
 ILAM Associate Member
 ILAM Foreign Member
 ILAM Student Member

Member Name

Membership No

NON-ILAM Member

ILAM Registered
Landscape Architecture Firm

(If applicable)

Company Name

ILAM Reg. No.

HOW TO REGISTER?

Email completed form to: mlaa14edition@gmail.com

together with the bank-in payment slip, payment should be made to

Bank Account Name: ILAM EVENTS

CIMB Bank | Acc No: 8002163877

Note : All payments made will not be refunded

ILAM Centre of Excellence (ICE) Sdn. Bhd.

1-10-3, Presint ALAMI,

Pusat Perniagaan Worldwide 2,

Persiaran Akuatik, Seksyen 13,

40100, Shah Alam,

Selangor, Malaysia.

T : +(60)19-881 7016

E : mlaa14edition@gmail.com

Submission Enquiries

DURING OFFICE HOURS ONLY:

MON-FRI / 9:00am - 6:00pm

LAr. Fong Jeng Jong

Whatsapp: +(60)14-911 3127

LAr. Charles Teo

Whatsapp: +(60)12-317 9825



MALAYSIA LANDSCAPE ARCHITECTURE AWARDS REGISTRATION FORM

REGISTRATION CLOSING DATE
24 JANUARY 2024 / 6:00pm

SUBMISSION CLOSING DATE
31 JANUARY 2024 / 6:00pm



ENTRANT FEES

Please indicate the number of projects in the BOX

01 & 02-PROFESSIONAL CATEGORY

MALAYSIAN PROJECTS

- 1A-Landscape Design Awards
- 1B-Landscape Analysis and Study Awards

FOR ILAM REGISTERED FIRM	No of Entries	Total (RM)
RM 650	X <input type="text"/> =	<input type="text"/>
RM 650	X <input type="text"/> =	<input type="text"/>
FOR NON ILAM REGISTERED FIRM		
RM 1,300	X <input type="text"/> =	<input type="text"/>
RM 1,300	X <input type="text"/> =	<input type="text"/>

INTERNATIONAL PROJECTS

- 2A-Landscape Design Awards
- 2B-Landscape Analysis and Study Awards

OPEN TO ALL LANDSCAPE CONSULTANCY FIRM (FROM IFLA MEMBER COUNTRIES)	No of Entries	Total (RM)
RM 2,000	X <input type="text"/> =	<input type="text"/>
RM 2,000	X <input type="text"/> =	<input type="text"/>

03-DEVELOPER CATEGORY

- 3A-Landscape Development Awards
- 3B-Landscape Master Plan Awards

MALAYSIAN OR INTL. PROJECTS	No of Entries	Total (RM)
RM 5,500	X <input type="text"/> =	<input type="text"/>
RM 5,500	X <input type="text"/> =	<input type="text"/>

04-LANDSCAPE CONTRACTOR CATEGORY

- 4A-Landscape Construction Awards

MALAYSIAN OR INTL. PROJECTS	No of Entries	Total (RM)
RM 3,000	X <input type="text"/> =	<input type="text"/>

05-SUPPLIER CATEGORY

- 5A-Green Product Awards

RM 2,500	X <input type="text"/> =	<input type="text"/>
----------	--------------------------	----------------------

06-GOVERNMENT CATEGORY

- 6A-Green Initiative Awards

LIMITED TO MAX OF TWO SUBMISSIONS	No of Entries	Total (RM)
FREE	X <input type="text"/> =	<input type="text"/>

07-CSR CATEGORY

- 7A-Green Initiative Awards

LIMITED TO MAX OF TWO SUBMISSIONS	No of Entries	Total (RM)
FREE	X <input type="text"/> =	<input type="text"/>

08-RESEARCHER CATEGORY

- 8A-Landscape Research Awards

RM 500	X <input type="text"/> =	<input type="text"/>
--------	--------------------------	----------------------

09-STUDENT CATEGORY

- 9A-Student Design Awards

RM 150	X <input type="text"/> =	<input type="text"/>
--------	--------------------------	----------------------

GRAND TOTAL (RM)

Payment Method (please tick)

- Cheque
- Bank in | Online Transfer (please attach slip)

I agreed all payments made to this award submission are not refundable.

Account Name: ILAM EVENTS
CIMB Bank | Acc No: 8002163877

SIGNATURE

DATE

Name:

Email Completed Form to: mlaa14edition@gmail.com / Note : All payments made will not be refunded



MALAYSIA LANDSCAPE ARCHITECTURE AWARDS REGISTRATION FORM



REGISTRATION CLOSING DATE
24 JANUARY 2024 / 6:00pm



SUBMISSION CLOSING DATE
31 JANUARY 2024 / 6:00pm

ORGANISED BY



MANAGED BY



ENTRANT FEES

Please indicate the number of projects in the BOX

10-CLIMATE ACTION CATEGORY

	MALAYSIAN OR INTL. PROJECTS	No of Entries	Total (RM)
10A-Env. & Landscape Management Awards	RM 1,500	X <input type="text"/> =	<input type="text"/>
10B-Low Carbon Landscape Awards	RM 1,500	X <input type="text"/> =	<input type="text"/>
10B-Green Infrastructure Awards	RM 1,500	X <input type="text"/> =	<input type="text"/>

11-LANDSCAPE INDUSTRY RECOGNITION (INDIVIDUAL)

11A-Young Landscape Architect Awards	RM 300	X <input type="text"/> =	<input type="text"/>
11B-Emerging Landscape Architect Awards	RM 800	X <input type="text"/> =	<input type="text"/>
11C-Prominent Landscape Architect Awards	RM 1,200	X <input type="text"/> =	<input type="text"/>

12-LANDSCAPE INDUSTRY RECOGNITION (FIRM)

12A-Emerging Landscape Architecture Firm	RM 1,000	X <input type="text"/> =	<input type="text"/>
12B-Top Landscape Architecture Firm	RM 1,500	X <input type="text"/> =	<input type="text"/>

GRAND TOTAL (RM)

Payment Method (please tick)

Cheque

Bank in | Online Transfer (please attach slip)

I agreed all payments made to this award submission are not refundable.

Account Name: ILAM EVENTS
CIMB Bank | Acc No: 8002163877

SIGNATURE

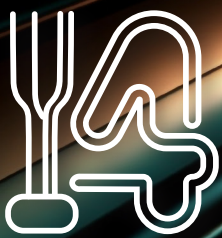
Name:

DATE

INSTITUTE OF LANDSCAPE ARCHITECTS MALAYSIA (ILAM)

Malaysia Landscape Architecture Awards

www.ilamalaysia.org/mlaa14



CALL FOR SUBMISSIONS

1 NOVEMBER 2023 - 31 JANUARY 2024



ORGANISED BY



ENDORSED BY



AN INITIATIVE OF

